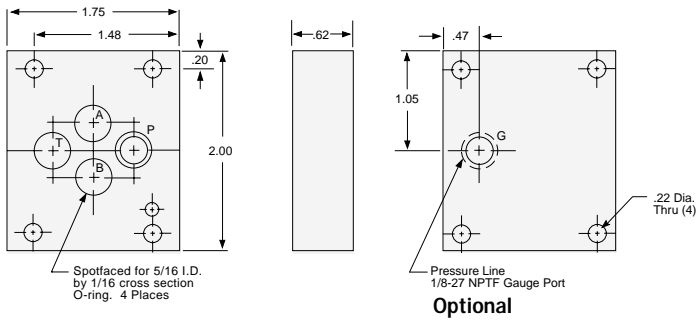


D03 Cover plates

SOURCE SELLS SOLUTIONS.



Parallel

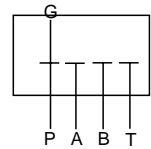
Part Number SFP10089 without gauge port
Part Number SFP10090 with gauge port

Pressure Rating: 3000 psi

Material: 6061-T6 Aluminum

Items Furnished with Cover Plate

- Four (4) #10-24 X 7/8 long socket head cap screws (90008)
- Four (4) Viton O-rings (90000) AS 568A-011
- One (1) Roll Pin (90006)

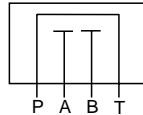


Series

Part Number SFP10091

Pressure Rating: 3000 psi

Material: 6061-T6 Aluminum

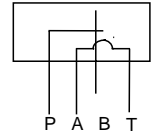


Cross Over

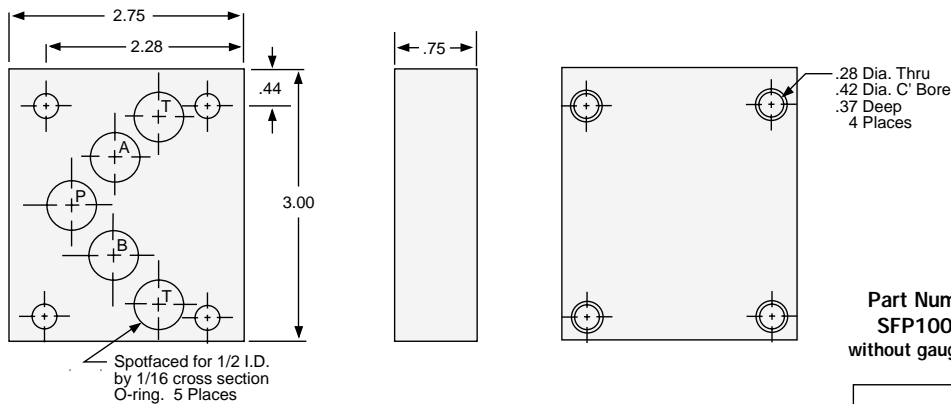
Part Number SFP10092

Pressure Rating: 3000 psi

Material: 6061-T6 Aluminum



D05 Cover Plates



Pressure Rating: 3000 psi

Material: 6061-T6 Aluminum

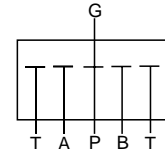
Items Furnished with Cover Plate

- Four (4) 1/4-20 X 3/4 long socket head cap screws (90009)
- Five (5) Viton O-rings (90003) AS 568A-014

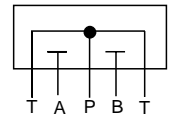
Part Number SFP10080 without gauge port



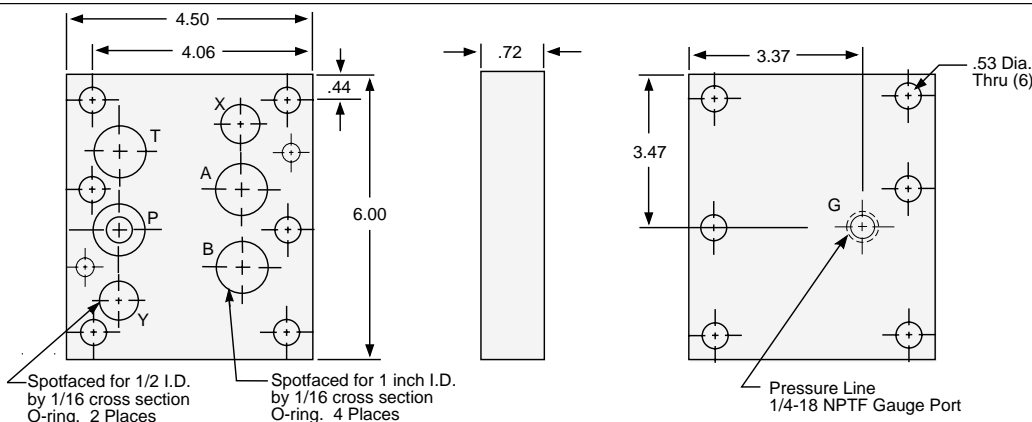
Part Number SFP10130 with gauge port



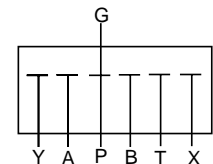
Part Number SFP10131



D08 Cover Plates



Part No. SFP10132 with gauge port



Y = pilot drain; X = pilot pressure

Part No. SFP10133



Y = pilot drain; X = pilot pressure

Pressure Rating: 3000 psi Material: 6061-T6 Aluminum

Items Furnished with Cover Plate:

- Six (6) 1/2-13 X 1-1/2 long socket head cap screws (90010)
- Two (2) small Viton O-rings (90003) AS 568A-014
- Four (4) large Viton O-rings (90005) AS 568A-022
- Two (2) Roll Pins (90007)