

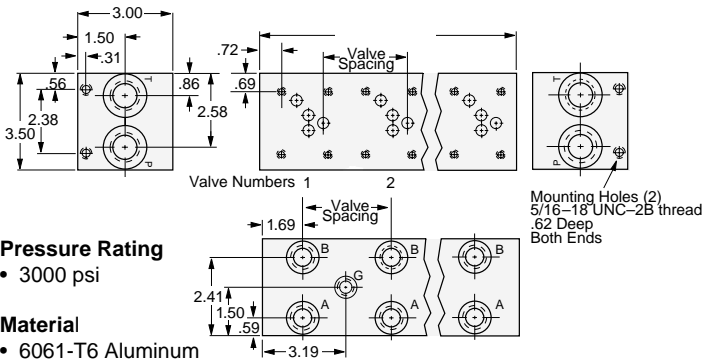
D05 Manifolds

SOURCE SELLS SOLUTIONS.



Parallel

3.25 Spacing



Pressure Rating

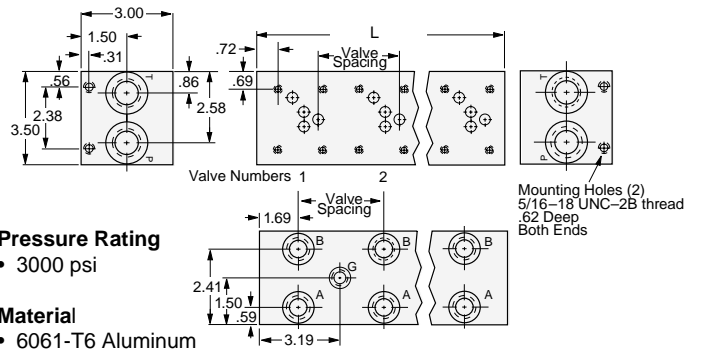
- 3000 psi

Material

- 6061-T6 Aluminum

Parallel

5.00 Spacing



Pressure Rating

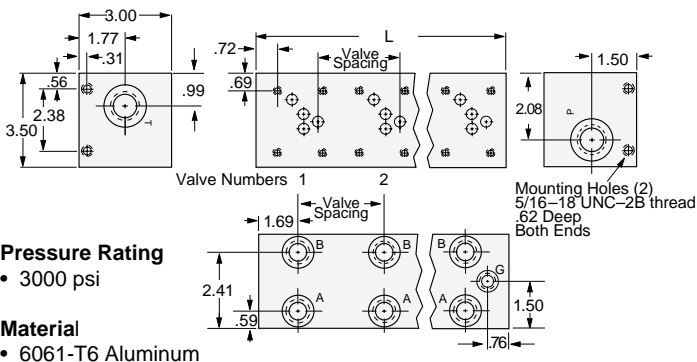
- 3000 psi

Material

- 6061-T6 Aluminum

Series

3.25 Spacing



Pressure Rating

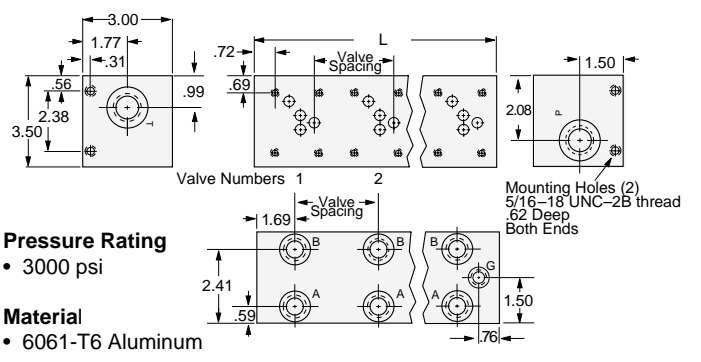
- 3000 psi

Material

- 6061-T6 Aluminum

Series

5.00 Spacing



Pressure Rating

- 3000 psi

Material

- 6061-T6 Aluminum

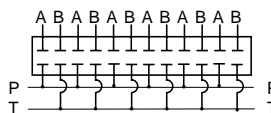
TYPE	NO. OF VALVES	PART NUMBER	"L" INCHES	APPROX WT LBS.
Parallel	2	SFP10012	6.50	6.0
	3	SFP10013	9.75	9.0
	4	SFP10014	13.00	12.0
	5	SFP10015	16.25	15.0
	6	SFP10016	19.50	18.0
	7	SFP10017	22.75	21.0
	8	SFP10018	26.00	24.0
	Series	2	SFP10057	6.50
3		SFP10058	9.75	9.0
4		SFP10059	13.00	12.0

TYPE	NO. OF VALVES	PART NUMBER	"L" INCHES	APPROX WT LBS.
Parallel	2	SFP10022	8.25	7.5
	3	SFP10023	13.25	12.3
	4	SFP10024	18.25	16.9
	5	SFP10025	23.25	21.5
	Series	2	SFP10062	8.25
3		SFP10063	13.25	12.3
4		SFP10064	18.25	16.9

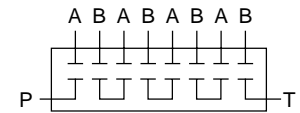
Ports

- P & T - 1 1/16-12 O-ring port (SAE -12)
- A & B - 3/4-16 O-ring port (SAE -8)
- G Gauge with plug - 7/16-20 O-ring port (SAE -4)

Parallel

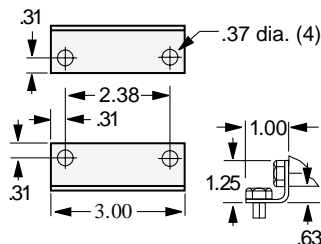


Series



Optional Mounting Bracket Kit:

Part Number SFP10082



Optional load sense checks are available on A and B ports; please consult factory.

To add optional relief cavity, add "R" after part number and specify cavity (generic 10-2 or Sun T-10A cavities available). Example: 10004R R=10-2.

D05 Subplate

SOURCE SELLS SOLUTIONS.



Side Ported

Part Number SFP10105

Port Size

- 3/4-16 O-ring ports (4)
(SAE -8)

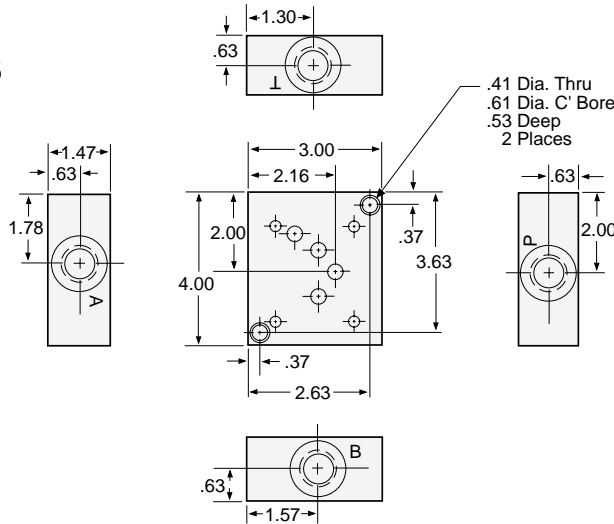
Pressure Rating

- 3000 psi

Material

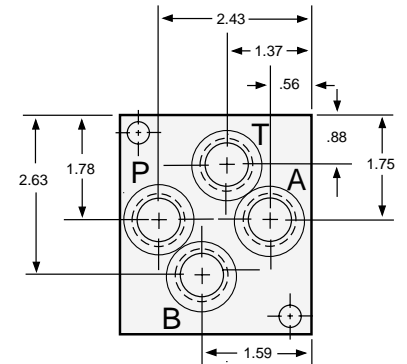
- 6061-T6 Aluminum

Two (2) 3/8-16 X 1 1/2 long socket head cap screws are furnished with each subplate (90002)



Back Ported

Part Number SFP10106



D05 Subplate

Dual Ported

Part Number SFP10107

Port Size

- 3/4-16 O-ring ports (6)
(SAE -8)

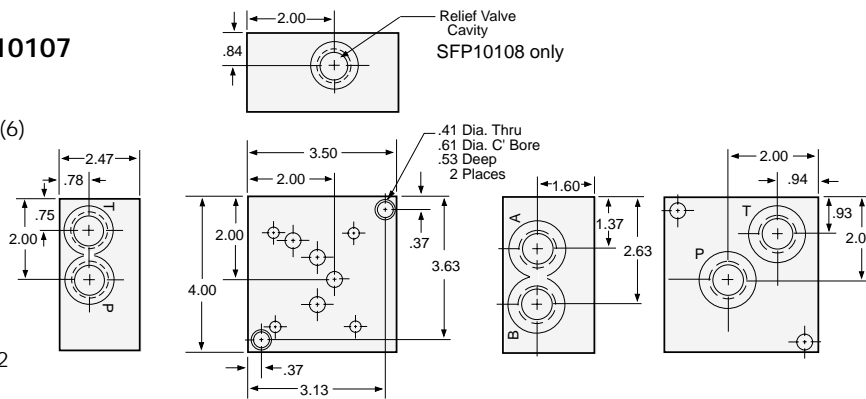
Pressure Rating

- 3000 psi

Material

- 6061-T6 Aluminum

Two (2) 3/8-16 X 2 1/2 long socket head cap screws are furnished with each subplate (90023)



Dual Ported

with relief valve cavity
Part Number SFP10108

The Relief Valve Cavity is machined to dimensions furnished by the following manufacturers:

Compact Controls	109
Delta	E Series
Fluid Controls	SC-316
Fluid Power Systems	10-2
HydraForce	VC-10-2
Modular Controls	C-10-2
Parker	C-10-2

D05 Subplate

Dual Ported with relief valve cavity

Part Number SFP10109

Port Size

- 3/4-16 O-ring ports (6)
(SAE -8)

Pressure Rating

- 3000 psi

Material

- 6061-T6 Aluminum

Two (2) 3/8-16 X 2 1/2 long socket head cap screws are furnished with each subplate (90023)

The Relief Valve Cavity is machined to dimensions furnished by the following manufacturers:

Compact Controls	109
Delta	E Series
Fluid Controls	SC-316
Fluid Power Systems	10-2
HydraForce	VC-10-2
Modular Controls	C-10-2
Parker	C-10-2

