

LV20

HIGH FLOW LOGIC VALVE



Function:

- Two Position, two-way main stage logic element with integral C8-2 industry common pilot cavity. Normally closed when pilot flow is blocked. Free flow from port 1 to port 2 when pilot flow is vented.

Application:

- Main stage logic element can be used as a high-flow unloading valve when used with a normally open or normally closed pilot solenoid cartridge, or as a high-flow relief valve when used with a proportional or mechanical pilot relief cartridge.

Pressure:

- 3000 PSI maximum

Flow:

- 70 GPM

Cavity:

- C20-2 Industry Common Cavity. Pilot cavity is Industry Common C8-2, Piloted nose to side (1 to 2)

Temperature:

- -40° to 100° C

Leakage:

- 5 cu. in/min @ 1000 psi

Construction:

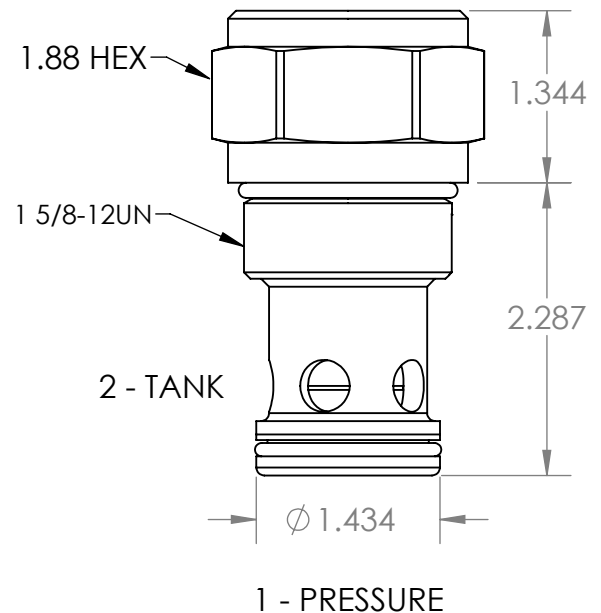
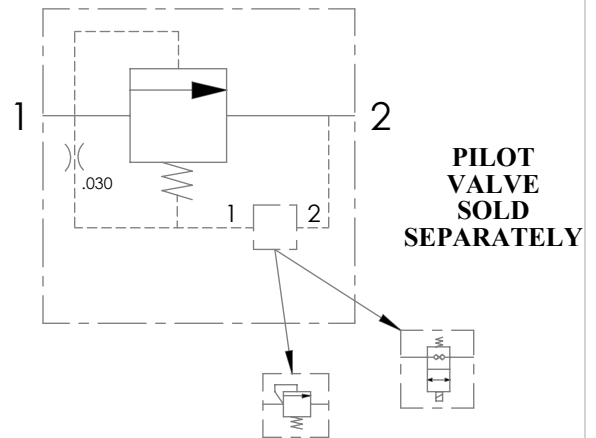
- Steel
- Hardened and ground spool and cage
- Exposed parts plated

Available Options:

Consult Factory for details

- Solenoid pilot
- Pilot relief
- Line Bodies

Pilot valve options;
Consult factory or see
reference sheet



HOW TO ORDER:

LV20

Spring options

- 02 20 psi
- 06 60 psi
- 10 100 psi

Seal material

- B Buna N
- V Viton

Line body options:

- 10184 Standard line body, SAE #16 ports
- 10184 LS Body with SAE #20 ports

Consult factory for other options