

P10/PP10

Motorized Relief Valve



Function

- Motor driven, Cartridge-style, hydraulic relief valve. Intended to be used as a remote control of hydraulic system pressure.

Operation

- Block flow from 1 to 2 until sufficient pressure at 1 to force the relief off its seat.
- P10 two stage pilot operated 15 gpm
- PP10 direct acting 1gpm

Operating Pressure

- 5000 psi maximum differential

Pressure Ranges

- **15** 200 to 1500 psi
 - **30** 350 to 3000 psi
 - **50** 500 to 5000 psi
- Custom ranges are available upon request

Voltage

- 12 & 24 VDC

Construction

- Cage, Body and Spool: Steel, exposed parts plated
- Motor housing assembly: Anodized aluminum
- Standard line bodies are aluminum
- Steel bodies are available upon request

Seal Material

- Buna N and polyurethane standard
- Viton or EPR optional

Current Draw

- (Only while adjusting)
- 0.8 amp when powered at 12 volts
 - 1.0 amp when powered at 24 volts

Temperature

- -40 to 120°C

Operating Speed

- 1-48 seconds, See appendix page 1 for details

Cavity

- C 10-2 industry common cavity

Valve Installation Torque

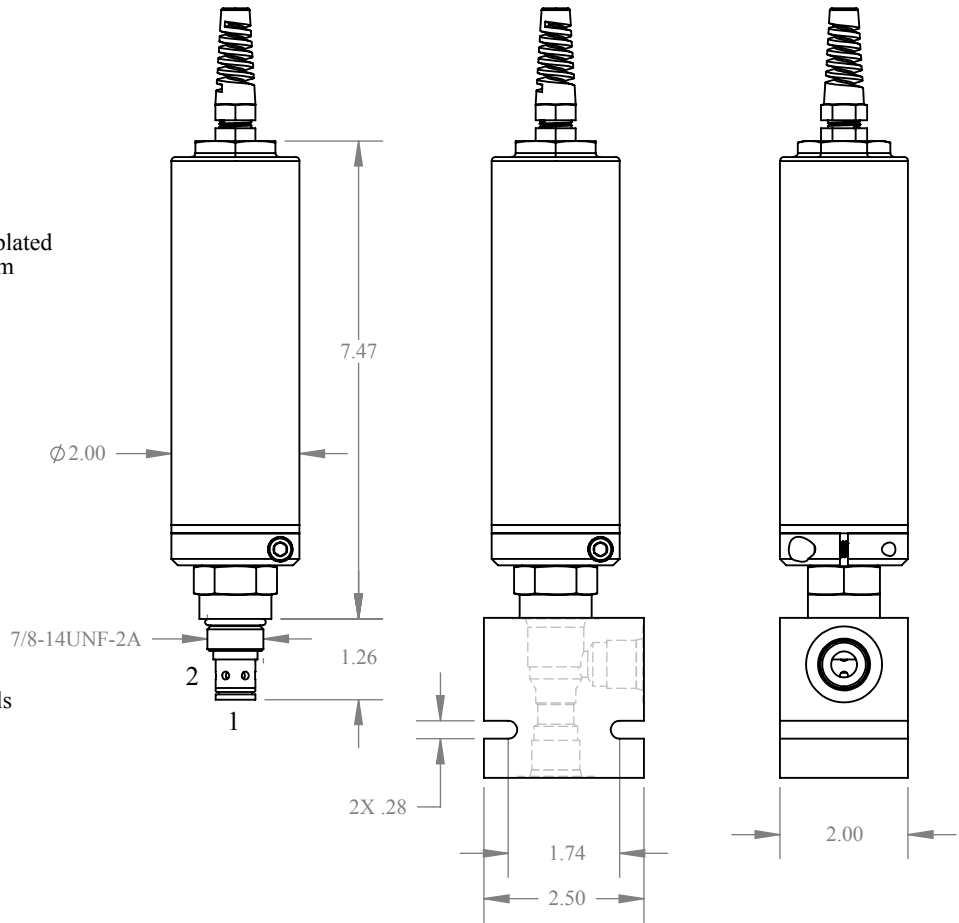
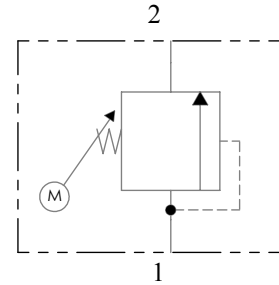
- 35 ft-lbs

Cartridge Weight

- P/PP10 cartridge only 2.6 lbs
- P/PP10 with aluminum body 3.7 lbs

Seal kit

- SFP25248



10

Direct or Two Stage Pilot:

P Two-stage pilot operated

PP Direct acting

Pressure Range:

15 200-1500 psi

30 350-3000 psi

50 500-5000 psi

Operating Speed/Voltage

Select letter code from appendix page 1.

Options:

See appendix page 2 for available options.

Line Bodies:

10182 SAE-8 Ports