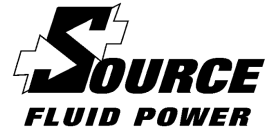


PR10

Motorized Pressure Reducing/Relieving Pilot-Operated

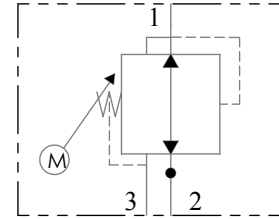


Function

- Motor driven, Cartridge-style, Hydraulic pressure reducing/relieving valve with internal spring chamber drain, designed to act as a pressure-regulating device for secondary circuits.

Operation

- The PR10 allows flow to pass bidirectionally from 2-1 with the spring chamber constantly drained at 3.
- Once pressure reaches a pre-determined pressure at port 1, the cartridge shifts to restrict input flow at 2, thereby regulating pressure at 1. In this mode the valve will also relieve 1 to 3



Hydraulic
Symbol

Operating Pressure

- 3000 psi maximum

Pressure Ranges

- **15** 200 to 1500 psi
 - **16** 200 to 1600 psi
 - **30** 350 to 3000 psi
- Custom ranges are available upon request

Voltage

- 12 & 24 VDC

Construction

- Cage, Body and Spool: Steel, exposed parts plated
- Motor housing assembly: Anodized aluminum
- Standard line bodies are aluminum
- Steel bodies are available upon request

Seal Material

- Buna N and polyurethane standard
- Viton or EPR optional

Current Draw

(Only while adjusting)

- 0.8 amp when powered at 12 volts
- 1.0 amp when powered at 24 volts

Temperature

- -40 to 120°C

Operating Speed

- 1-48 seconds, See appendix page 1 for details

Cavity

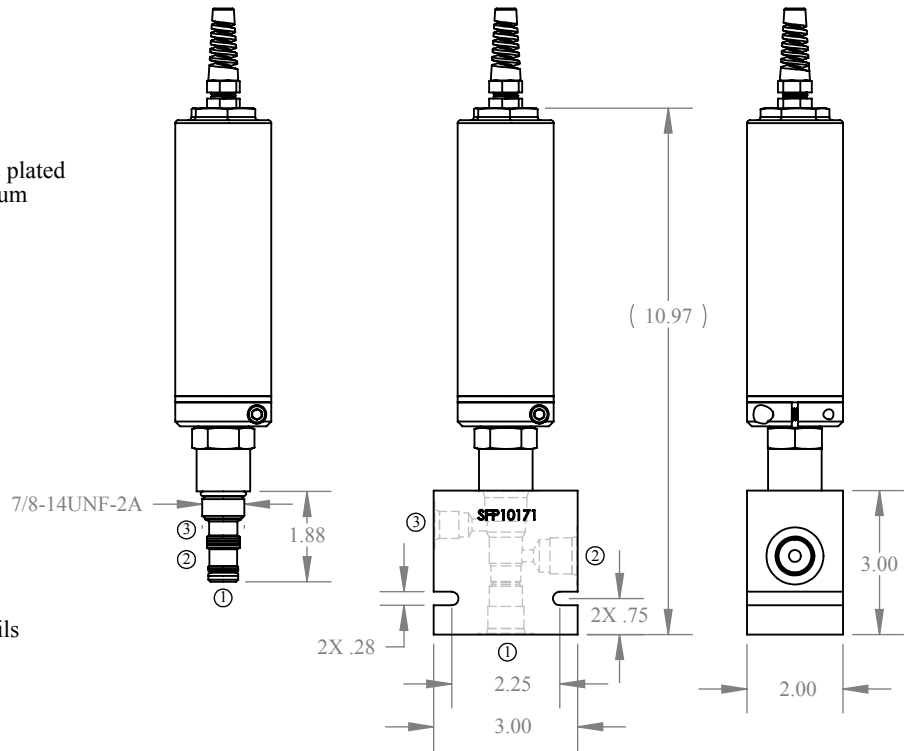
- C 10-3 industry common cavity

Valve Installation Torque

- 35 ft-lbs

Cartridge Weight

- PR10 cartridge only 2.8 lbs
- PR10 with aluminum body 4.4 lbs



PR10

Pressure Range:

- 15** 200-1500 psi
- 16** 200-1600 psi
- 30** 350-3000 psi

Operating Speed/Voltage

Select letter code from
appendix page 1.

Options:

See appendix
page 2 for
available options.

Line Bodies:

10171 Ports 1 and
2 SAE-8.
Port 3 SAE-6